

Dryer

Mold Dehumidifier

Conveyor

Temperature Controller

Blender

Granulator

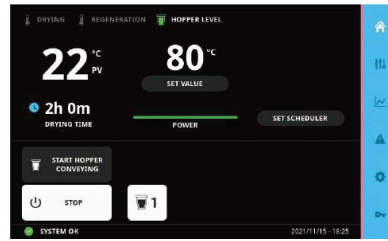
System & Others



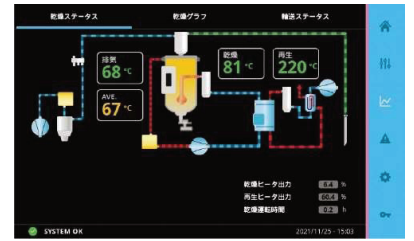
MJ6-i-G3-30

## Energy Saving Type equipped with “ iplas ” functions

### Touch Screen



### UX design that can be operated intuitively



### Easy Maintenance



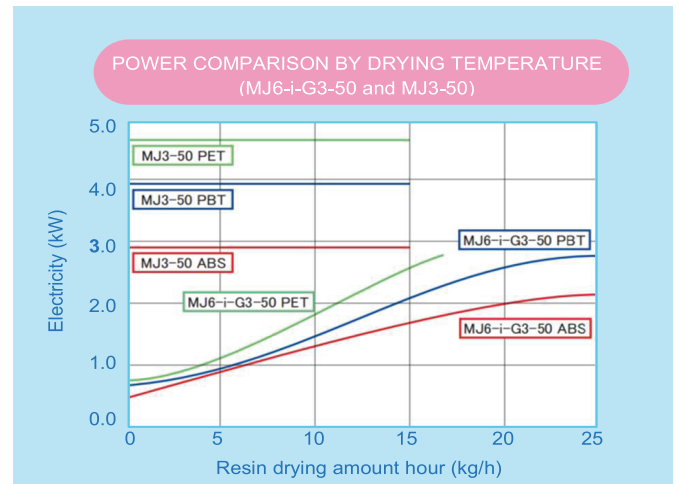
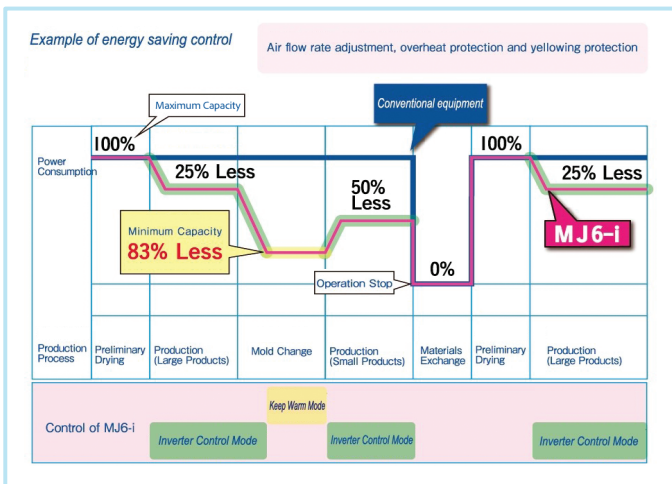
Push Damper



Dust Box



Improved drying capacity



### Standard Specification

Model	Unit	MJ 6-i-G3-30	MJ 6-i-G3-50	MJ 6-i-G3-75	MJ6-i-G3-135	MJ 6-i-G3-300	
Power Supply	Voltage	V					AC200/380V, 50/60Hz, 3 Phase
	Operation Circuit Voltage	V					AC100V, DC24V
	Apparent Power	kVA	6.7	7.2	8.2	13.5	26.4
	Breaker Capacity	A	30/15			50/30	100/63
Air Supply	Pressure	MPa					0.5
	Flow Rate	L/h	10				20
	Diameter	mm	Ø 6				
Operating Temperature	°C	70~160					
Dew-point ※1	°C	At Ambient Condition : Temperature 10°C~35°C					
		-40 ~ -60°C (Minimum)					
Hopper Volume ※2	kg	30	50	75	135	300	
	L	50	85	130	225	500	
Drying	Heater Capacity	kW	2.1		2.4	5.4	10.8
	Blower Output	kW	0.28		0.42	1.15	2.55
Conveying Blower	Output	kW (50/60Hz)	1.1/1.5			2.55	
Regeneration	Blower Output	kW	0.28			0.42	1.15
	Heater Capacity	kW	1	1.5	2.1	3.1	5.8
Outer Dimension	W	mm	985	993	1,068	1,387	1887
	D	mm	611	611	611	631	916
	H	mm	2,046	2,369	2,369	2,626	2689
Product Weight	kg	265	275	290	395	715	

※1 Ambient Condition: Temperature 30°C Relative Humidity 75% (DP+25°C) Air Inflow: 10%  
When it falls below the above conditions, the minimum dew point (-60°C) could be obtained.

※2 Volume is that of when using virgin materials with bulk density of 0.6kg/L.  
For product improvement, specifications in this catalog may be changed without prior notice.

### Options

- Alarm indicator • Weekly timer • Dew point monitor • Power meter • Leakage breaker • Connecting JET SELECTOR • Semi-Circulation • Full Exhausts
- The secondary convey : 2 directions • After cooler (water-cooled) • Lower limit level meter • External alarm buzzer